

# TYP M

## MIXED POST BASES

### OUTDOOR

Hot dip galvanizing for use in service classes 1, 2 and 3.

### APPLICATION

Specific solutions for fastening in the ground, on the wall or in concrete.  
Inclinable versions.



### CHARACTERISTICS

FOCUS	specific applications
COLUMNS	from 70 x 70 mm to 160 x 160 mm
ROUND COLUMN	from Ø80 to Ø120 mm
FASTENERS	HBS PLATE EVO, SKR, VIN-FIX PRO



### MATERIAL

Hot bright zinc plated carbon steel three dimensional perforated plate.

### FIELDS OF USE

Outdoor joints. Suitable for service class 1, 2 and 3. Construction of pergolas and fences.

# M70 S

## SPIKED POST BASE



### CODES AND DIMENSIONS

CODE	sleeve [mm]	sleeve height [mm]	thickness [mm]	sleeve holes [n. x mm]	tip length [mm]	pcs
M70S70	71 x 71	150	2,0	4 x Ø11	600	1
M70S90	91 x 91	150	2,0	4 x Ø11	600	1
M70S100	101 x 101	150	2,0	4 x Ø11	750	1
M70S120	121 x 121	150	2,0	4 x Ø11	750	1

M70S100 and M70S120 not included in the ETA document.

# M70 R

## SPIKED POST BASE



### CODES AND DIMENSIONS

CODE	sleeve [mm]	sleeve height [mm]	thickness [mm]	sleeve holes [n. x mm]	tip length [mm]	pcs
M70R80	Ø81	150	2,0	4 x Ø11	450	1
M70R100	Ø101	150	2,0	4 x Ø11	450	1
M70R120	Ø121	150	2,0	4 x Ø11	600	1

M70R120 not included in the ETA document.

# M50

## POST BASE WITH ROD



### CODES AND DIMENSIONS

CODE	base [mm]	height [mm]	thickness [mm]	column holes [n. x mm]	rod Ø x L [mm]	pcs
M5070	71 x 60	150	5,0	6 x Ø11	20 x 200	1
M5090	91 x 60	150	5,0	6 x Ø11	20 x 200	1
M50100	101 x 60	150	5,0	6 x Ø11	20 x 200	1
M50120	121 x 60	150	5,0	6 x Ø11	20 x 200	1

# M53

## POST BASE WITH ROD



### CODES AND DIMENSIONS

CODE	sleeve [mm]	height [mm]	thickness [mm]	base holes [n. x mm]	rod Ø x L [mm]	pcs
M5380	Ø81	150	3	4 x Ø12,5	20 x 200	1
M53100	Ø101	150	3	4 x Ø12,5	20 x 200	1
M53120	Ø121	150	3	4 x Ø12,5	20 x 200	1

# M52

S235  
HOT DIP

## POST BASE WITH ROD



## CODES AND DIMENSIONS

CODE	base	height	thickness	base holes	wings holes	rod Ø x L	pcs
	[mm]	[mm]	[mm]	[n. x mm]	[n. x mm]	[mm]	
M5290	91 x 70	120	2,5	4 x Ø8	4 x Ø11	20 x 200	1
M52100	101 x 80	120	2,5	4 x Ø8	4 x Ø11	20 x 200	1
M52120	121 x 100	140	2,5	4 x Ø8	4 x Ø11	20 x 200	1

# M51

S235  
HOT DIP

## POST BASE WITH ROD



## CODES AND DIMENSIONS

CODE	sleeve	height	thickness	base holes	wings holes	rod Ø x L	pcs
	[mm]	[mm]	[mm]	[n. x mm]	[n. x mm]	[mm]	
M51100	Ø101	150	3,0	2 x Ø8	4 x Ø11	20 x 200	1
M51120	Ø121	150	3,0	2 x Ø8	4 x Ø11	20 x 200	1



# M60

## POST BASE WITH ROD

S235  
HOT DIP

CE  
ETA 10/0422



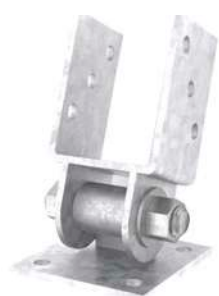
## CODES AND DIMENSIONS

CODE	base [mm]	height [mm]	thickness [mm]	column holes [n. x mm]	rod Ø x L [mm]	pcs
M6080	80 x 80	130	8,0	4 x Ø11	20 x 250	1

# S40

## INCLINABLE POST BASE

HOT DIP



## CODES AND DIMENSIONS

CODE	internal size [mm]	height [mm]	thickness [mm]	bottom plate [mm]	base holes [n. x mm]	column holes [n. x mm]	pcs
S4070	71 x 60	100	5,0	100 x 100	4 x Ø12	6 x Ø11	1
S4090	91 x 60	100	5,0	100 x 100	4 x Ø12	6 x Ø11	1

# M10

## WALL-MOUNTED POST BASE



### CODES AND DIMENSIONS

CODE	sleeve [mm]	height [mm]	thickness [mm]	width [mm]	wall holes [n. x mm]	sleeve holes [n. x mm]	pcs
M1070	71 x 71	150	2,0	151	6 x Ø11	4 x Ø11	1
M1090	91 x 91	150	2,0	175	6 x Ø11	4 x Ø11	1

# M20

## “U” SHAPED POST BASE



### CODES AND DIMENSIONS

CODE	base [mm]	height [mm]	thickness [mm]	base holes [n. x mm]	column holes [n. x mm]	pcs
M2070	71 x 60	150	5,0	1 x Ø13 + 2 x Ø11,5	6 x Ø11	1
M2090	91 x 60	150	5,0	1 x Ø13 + 2 x Ø11,5	6 x Ø11	1
M20100	101 x 60	150	5,0	1 x Ø13 + 2 x Ø11,5	6 x Ø11	1
M20120	121 x 60	150	5,0	1 x Ø13 + 2 x Ø11,5	6 x Ø11	1

# M30

## POST BASE BRACKET



### CODES AND DIMENSIONS

CODE	internal size [mm]	height [mm]	thickness [mm]	bottom plate [mm]	base holes [n. x mm]	column holes [n. x mm]	pcs
M3070	71 x 50	200	5,0	160 x 60	2 x Ø11,5	4 x Ø11	1
M3080	81 x 50	200	5,0	170 x 60	2 x Ø11,5	4 x Ø11	1
M3090	91 x 50	200	5,0	180 x 60	2 x Ø11,5	4 x Ø11	1
M30100	101 x 50	200	5,0	190 x 60	2 x Ø11,5	4 x Ø11	1
M30120	121 x 50	200	5,0	210 x 60	2 x Ø11,5	4 x Ø11	1

M30120 not holding CE marking.